

29th September 2017

Investment Objective

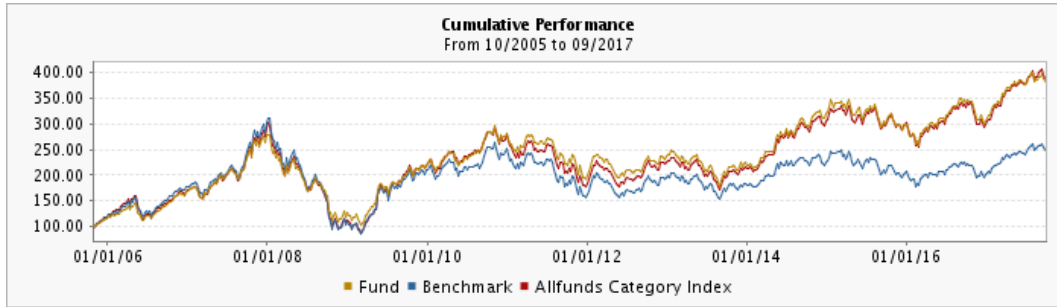
The Fund's investment objective is capital appreciation. The Fund invests principally in equity securities including common stock, preferred stock and convertible securities, as well as in warrants, participatory notes, and depository receipts of (i) companies registered in India, (ii) companies which perform a predominant part of their business in India, and (iii) holding companies which hold a predominant part of their participations in companies referred to in (i) and (ii), all of them across the entire market capitalization spectrum from small- to large-cap companies.

Classification

Allfunds Category India General Eq.
European Fund Classification Equity India

Cumulative Performance

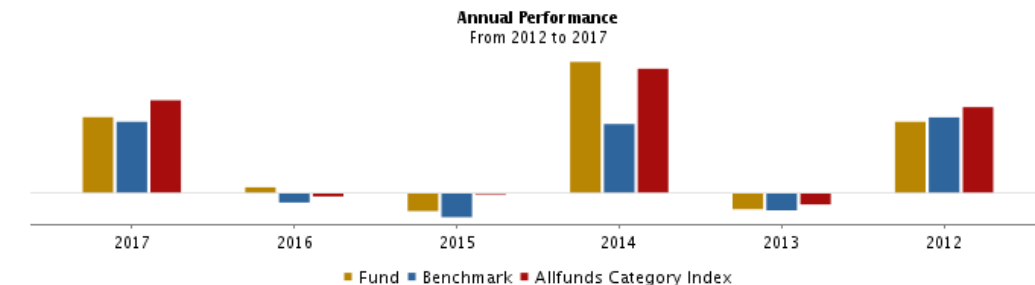
Benchmark MSCI India (USD)



| | Daily | Weekly | 1 month | 3 months | 6 months | 1 year | 3 years | 5 years | Inception |
|-------------------------|--------|---------|---------|----------|----------|---------|---------|---------|-----------|
| Fund | 0.72 % | -2.16 % | -1.30 % | 1.55 % | 4.72 % | 12.77 % | 27.72 % | 64.51 % | 279.70 % |
| Benchmark | 0.63 % | -2.70 % | -2.24 % | 2.69 % | 5.27 % | 13.75 % | 9.08 % | 27.65 % | 147.23 % |
| Allfunds Category Index | 0.74 % | -2.14 % | -1.22 % | 3.27 % | 8.30 % | 17.04 % | 32.32 % | 75.28 % | 286.99 % |

Annualized Return

| | 2017 (YTD) | 2016 | 2015 | 2014 | 2013 | 2012 |
|-------------------------|------------|---------|---------|---------|---------|---------|
| Fund | 24.00 % | 1.93 % | -5.50 % | 41.41 % | -4.95 % | 22.60 % |
| Benchmark | 22.56 % | -2.81 % | -7.42 % | 21.87 % | -5.28 % | 23.93 % |
| Allfunds Category Index | 29.33 % | -0.91 % | -0.25 % | 39.28 % | -3.44 % | 27.16 % |



Quarterly Performance

| | 2017 | 2016 | 2015 | 2014 | 2013 | 2012 |
|-----------|---------|---------|---------|---------|---------|---------|
| Quarter 1 | 19.17 % | -1.80 % | 5.82 % | 9.03 % | -3.72 % | 19.03 % |
| Quarter 2 | 3.10 % | 6.44 % | -3.80 % | 15.99 % | -7.42 % | -9.45 % |
| Quarter 3 | 0.93 % | 8.15 % | -5.62 % | 4.05 % | -5.98 % | 11.01 % |
| Quarter 4 | - | -9.84 % | -1.64 % | 7.47 % | 13.42 % | 2.47 % |

Statistics

Calculation period 3 years. Data calculated with daily values

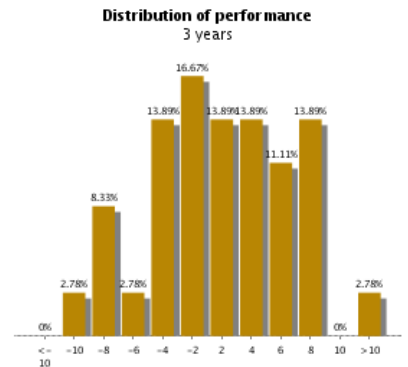
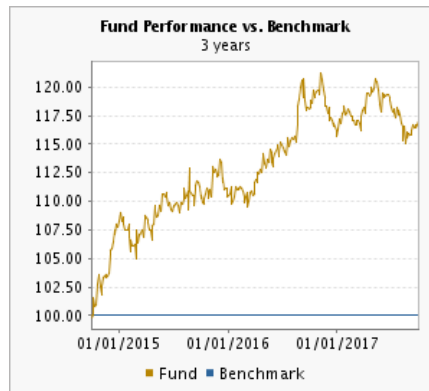
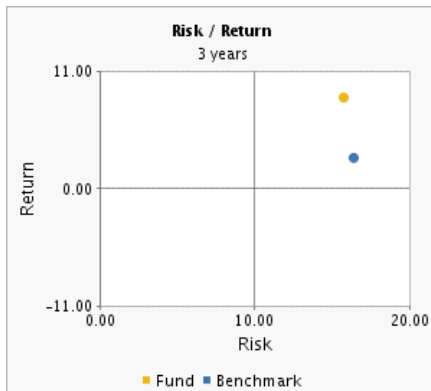
| | Annualized Return | Volatility | Sharpe Ratio | Maximum Drawdown | Correlation | R2 | Beta | Alpha | T.E. | Info Ratio | Jensen Alpha | Treynor Ratio |
|-----------|-------------------|------------|--------------|------------------|-------------|------|------|--------|--------|------------|--------------|---------------|
| Fund | 8.49 % | 15.66 % | 0.56 | -26.59 % | 0.90 | 0.82 | 0.86 | 5.95 % | 7.02 % | 0.79 | 5.72 % | 10.09 |
| Benchmark | 2.94 % | 16.39 % | 0.19 | -28.96 % | | | | | | | | |

Overview

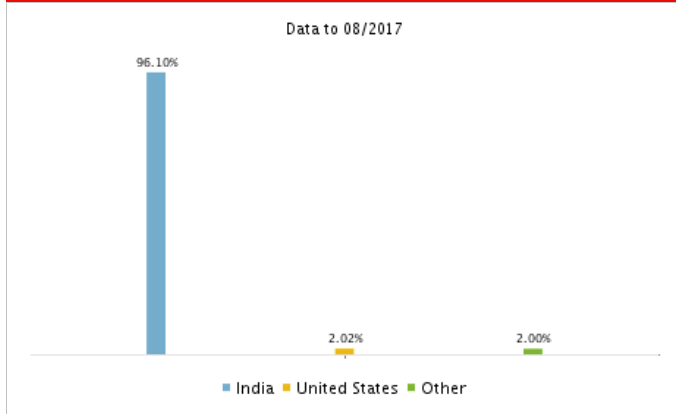
| | |
|--------------------|-------------------------------------|
| Fund Benchmark | MSCI India Index |
| Inception | 25/10/2005 |
| Code | |
| ISIN | LU0231203729 |
| Currency | USD |
| Class A | |
| Domicile | Luxembourg |
| UCI | |
| Name | FRANKLIN TEMPLETON INVESTMENT FUNDS |
| Legal Structure | SICAV |
| CNMV | - |
| UCITs | Yes |
| Minimum Investment | |
| Initial | 5,000 USD |
| Subsequent | 1,000 USD |
| Fees | |
| Management | 1.00% |
| Distributions | 0.50% |
| Performance | - |
| OCF | (27/01/2017) |
| | 1.89% |
| Initial Max. | 5.75% |
| Exit Max. | 0.00% |
| AUM | |
| AUM Date | 29/09/2017 |
| Fund | 4,290.9701 (mill.) USD |
| Class | 918.1316 (mill.) USD |

29th September 2017

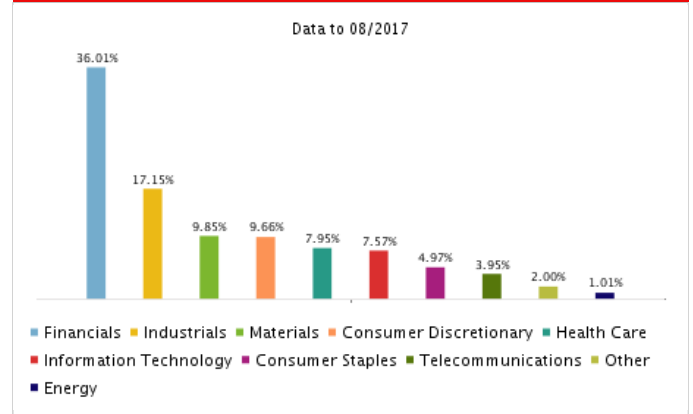
Charts



Geographic Breakdown



Sector Breakdown



Top ten holdings

Data to 08/2017

| | |
|----------------------------|-------|
| 1. HDFC BANK LTD | 9.19% |
| 2. YES BANK LTD | 5.62% |
| 3. KOTAK MAHINDRA BANK LTD | 4.83% |
| 4. TATA MOTORS LTD | 4.34% |
| 5. ULTRATECH CEMENT LTD | 3.79% |
| 6. INFOSYS LTD | 3.75% |
| 7. HINDUSTAN UNILEVER LTD | 3.65% |
| 8. STATE BANK OF INDIA | 3.58% |
| 9. LARSEN & TOUBRO LTD | 3.47% |
| 10. CUMMINS INDIA LTD | 2.92% |

Sources

FRANKLIN TEMPLETON IM LTD (LU): , UCI, Fund Benchmark, Inception, Dividends, Currency, ISIN, Initial Max., Exit Max., Annual Mgmt. Fee, Distribution Fee, Performance, Minimum initial, Minimum Subsequent, AUM (mill.), Investment Objective, Prices used to calculate Performance and Statistics, Risk, Portfolio Breakdown, Fund Name, Domicile, OCF.

Allfunds Bank: Fund Type, Allfunds Category, Comparative Benchmark selection, Returns, Statistics, Charts.

Bloomberg: Comparative Benchmark prices.

European Fund Classification: European Fund Classification.

However, we have not independently verified the information obtained from these sources and so do not guarantee that it is accurate, adequate or complete.

Disclaimer

This document does not constitute a public offer of securities in the United Arab Emirates and is not intended to be a public offer. This document is for information and illustrative purposes only; it is not an offer or solicitation to buy or sell any investment. ADCB will not be held liable for the information provided in this document which has been obtained from and prepared by 3rd party sources. This document should be read in conjunction with the Fund Prospectus, TermSheet and Subscription Agreement. Information included in this document is based on past performance; current valuation may be higher or lower and Return on Investment and Principal Amount value will fluctuate. Past performance does not guarantee future results. Investment products are not bank deposits and are not guaranteed by ADCB, they are subject to investment risks, including possible loss of principal amount invested. This Fund is not intended for sale to US persons. Please refer to ADCB Terms & Conditions for Investment Services.